

Installation Manual on Continuous ink supply system (CISS) For Canon IP 2550/3000

Thank you for using the “INKSYSTEM” Continuous ink supply system. It is the best device for an inkjet printer, and it will definitely decrease your printing costs. Before using this system, please read this manual carefully. The pictures in this manual may be different with the real ones. It’s just for your reference.

Remarks: Some pictures maybe different from the real products, especially for the external ink tank, these pictures are just for reference, please handle according the real products.

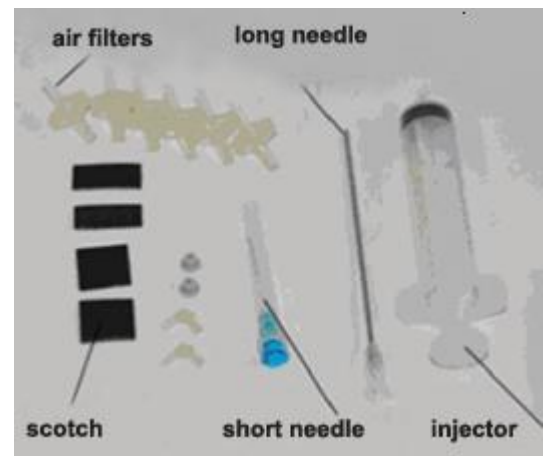
I. Instruction

1. Accessories

1) Continuous ink supply system	1
2) Air Filters	4
3) Sponge	1
4) Injector	1
5) Long needle	1
6) Short needle	1
7) Protection clamp	1
8) Installation Manual	1
9) Certificate on free installation.....	1



Pic. 1-1



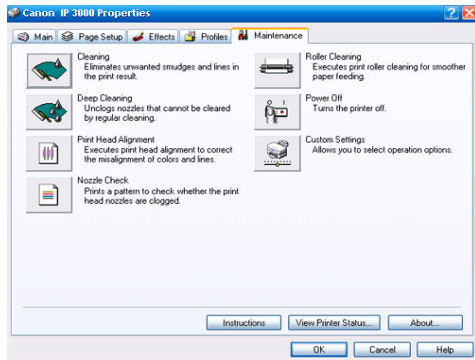
Pic. 1-2

2. Inspection before installation

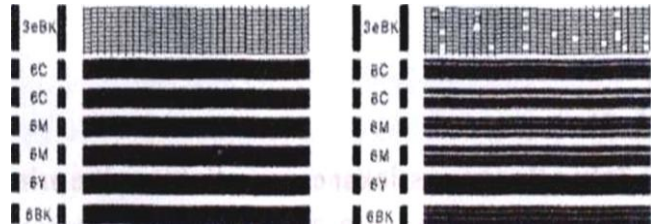
Check whether CISS is pulling out, if tube is disconnected.
Please contact local distributor if have found problems.

II. Test printer

1. Check whether printer conditions are normal.
2. Enter nozzle test option (2-1), print nozzle test sheet to see whether nozzle is normal (2-2, 2-3).



Pic. 2-1



Pic. 2-2

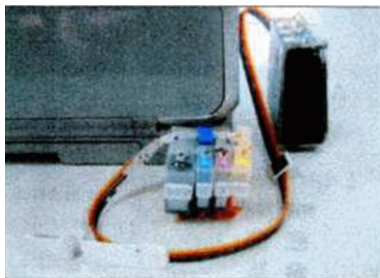
Pic. 2-3

3. If printer is alright, please print a picture to see the result.

III. Installation Procedures

1. Prepare the system

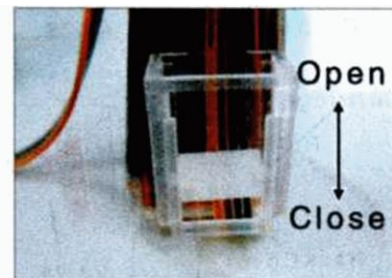
Put this system on the right side of the printer, tidy up ink flow tubes (3-1-1), pull out all air plug and replace them with air filter with bigger side downward (keep air plug for next use) (3-1-2). Move tube valve to close position (3-1 - 3), if you do not close this valve, ink maybe flow back, leak, or mis-color.



Pic. 3-1-1



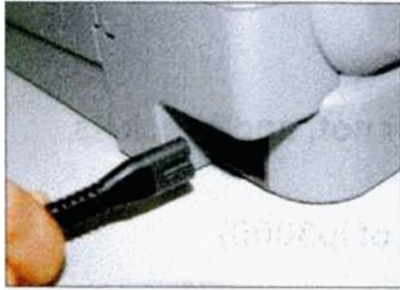
Pic. 3-1-2



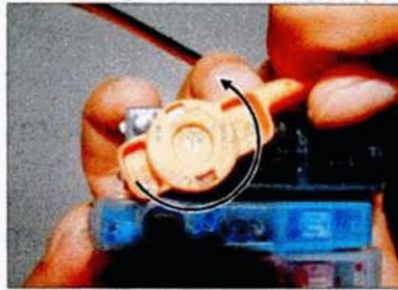
Pic. 3-1-3

2. Install the CISS cartridges

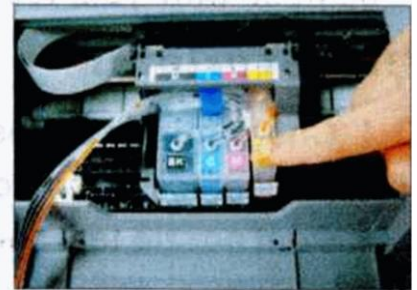
Turn the printer on, open it's cover, cartridge holder will move to the "cartridge change" position, plug the power source off (3-2-1), take the original cartridge off. Take cartridge red color according to the arrow head (3-2-2). Install the cartridges according to the color order; press back the cartridge cover (3-2-3).



Pic. 3-2-1



Pic. 3-2-2



Pic. 3-2-3

3. Fix iron rack

Take the sponge sticker cover off, stick it on the printer body according to the indicated space , do not twist the tube .

4. Check the tube length

Move cartridge holder to the left side, then right side and check whether ink tube is too long or too short. Move cartridge holder to the cartridge-changing place and check whether Ink tube will fall on the paper board. Generally, we have adjusted ink tube to the right size before shipment (If it is too long or too short, please double check before printing). We've adjusted the length to the right size before the shipment, please double check.

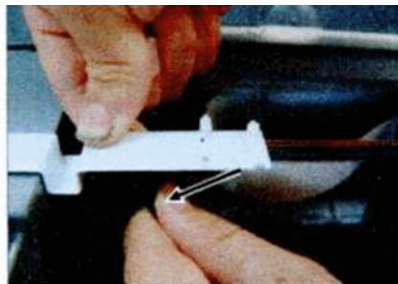
5. Adjust the ink tube length

If step 4 is ok, then there is no need to go through this step.

If the tube length is too short then lengthen it (3-5-1, 3-5-2), if too long then shorten (3-5-3). If the tube falls down, you need adjust the angle of sticker to prevent falling.



Pic. 3-5-1



Pic. 3-5-2



Pic. 3-5-3

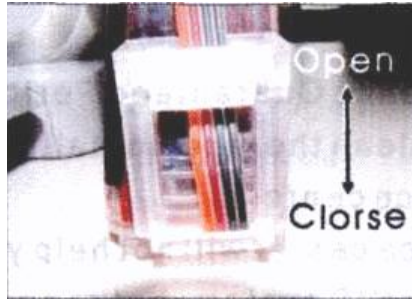
6. Fix ink tube

Tear the cover of the sponge sticker off, and stick it. When you close the printer up-cover, the cover button should be closed. Please, do not let the tube twist too much; otherwise, it will damage the free flow of the ink.

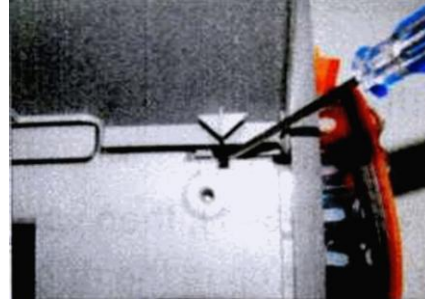
7. Test printer operation

Move tube valve to the open position (3-7-1), use a screw or other tools to press down cover button (3-7-2), plug on power source, turn the printer on, check if the

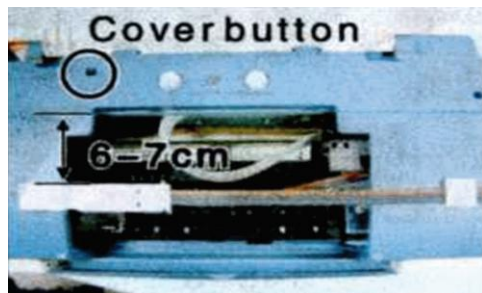
printer can work normal or not, check if the ink tube will touch the printer data-transfer wire or not. Close the printer's cover, check if there is abnormal noise. Select printer maintenance option (2-1), print nozzle test sheet, if test sheet is normal (2-2), you can begin printing. If the line is missing (2-3), please clean printer head. If printer head is still wrong after cleaning, please contact your local distributor.



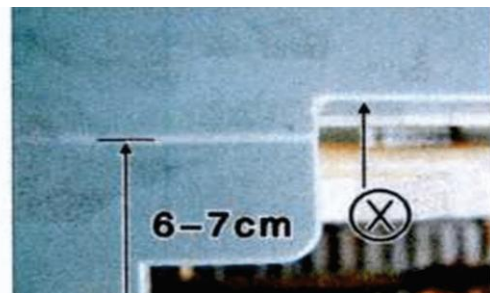
Pic. 3-7-1



Pic. 3-7-2



A-1

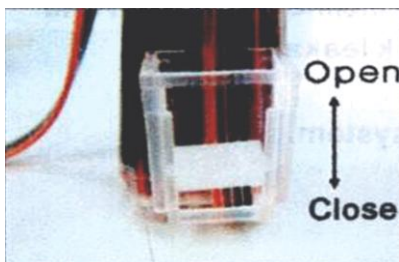


A-2

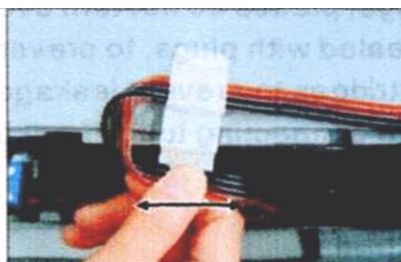
IV. Take the CISS off

During printing, if you need to take the system off, please first take off air filter, insert back air plug, move tube valve to CLOSE position (4-1-1), Move out cartridge holder, detach the rack (4-1-2) (can't be too rude to change the shape of rack). Take ink cartridges out, press back the red cover at 45 degree angle (4-1-3).

Notice: If you do not close the tube valve before taking the cartridge out, or you do not install the red cover back to cartridge, it maybe result that ink in the cartridges will flow back to the external tank or flow out from the cartridge nozzle, these case will damage the second normal use of system.



Pic. 4-1-1



Pic. 4-1-2



Pic. 4-1-3

V. Refill ink

During printing, if you found out that the ink level in the tank is below the red line, please add ink according to the methods.

VI. Check air balance tube

During printing, if you find some abnormal cases, such as bad output, ink drip out on paper, then you need to check the air balance tube to see if exist ink. If yes, please do according to the manual of "ink pump out from balance tube".

VII. Warnings

1. During printing, please do not take cartridges over than the printer. Please keep ink tank and printer in the same level.
2. During printing, do not inverse, lift up or lower ink tanks.
3. Please do not block up ink tanks for curiosity or for fear of less ink
4. Use CISS at clean environment and within the temperature range 15-35 degrees.

VIII. Product Warranty

INKSYSTEM warrants its products to be free from defects in material or workmanship. Rarely the equipment partly or completely fails within the warranty period. In these cases we do everything possible to ensure that our customers are satisfied with the purchase.

The INKSYSTEM CISS installation is free in any of the representative offices.

The warranty repairs are done quickly, with good quality and for free. The warranty duration is 12 months from the date of retail sale. Every product has a Warranty Certificate. The transportation of the failed product is provided by its owner.

Please note that the ink and the photo paper are expendable materials and there can be no returning of unsealed ink tanks and photo paper packages. When defects are found by the service managers, a replacement for a new product is performed.

Please adhere to the following points to receive a warranty service as soon as possible:

When accepting the product check if the warranty certificate is filled in correctly.

- Keep the original receipt that contains the date of purchase information.
- Adhere to operating conditions that are provided in the User's Manual, or on the web-page of the specific product.
- Try to avoid mechanical damages when operating the product: chippings, dents, fractures, scratches, etc.

We cannot provide a warranty repair under several conditions:

- If the warranty certificate is wrongly filled in.
- If the device has mechanical damages: chippings, dents, fractures, scratches, etc.

- If the defect appeared under the circumstances of insuperable forces, accidents, intended or careless actions of the user or a third party.
- If the ink used was not manufactured by “INKSYSTEM” (South Korea)
- If the printing limit was exceeded – more than 100 000 prints.

The “INKSYSTEM” Company excludes for itself any liability for incidental, consequential, indirect, special, or punitive damages of any kind to people, pets or property if the stated damages have been affected because of rules and operational conditions / product installation disregard. The Company also excludes any liability for intentional or careless actions of the user or third parties, for loss of revenue or profits, loss of business, loss of information or data, or other financial loss arising out of or in connection with the sale, installation, maintenance, use, performance, failure, or interruption of the possibility of such damages.

Warranty certificate

<p><i>(Product)</i></p> <p>Continuous ink supply system</p> <p><i>(Model Name)</i></p> <p>_____</p> <p><i>(Serial No)</i></p> <p>_____</p> <p><i>(Date of Purchase)</i></p> <p>_____</p> <p><i>(Warranty Period)</i></p> <p>1 year from the date of retail purchase</p>	<p>Seller company</p> <p>_____</p> <p>SEAL</p>
---	--

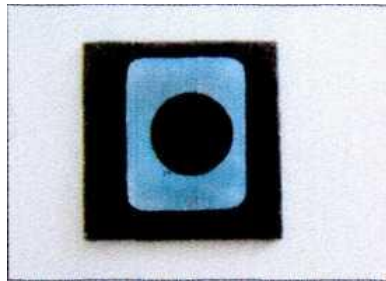
The warranty conditions are agreed and accepted. No claims against the product appearance and the list of equipment.

Customer's signature

Install Nozzle Seal for BCI – 24BK

In order to strengthen the connection of cartridges and the printer head, prevent air leaking, ink back flowing, ink leaking, we need to add a silicon seal on cartridge nozzle, the processed are as follows:

1. Clean the seal: Take out 20*20 sponge sticker and seals, tear off the sticker cover, put seal on the sticker to wipe off the dirt (double sides should be cleaned) (1-1).

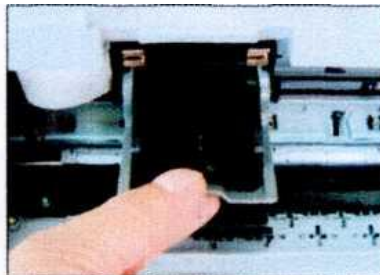


Pic. 1-1

2. Take the printer head out: turn the printer on, open the printer's cover, cartridge holder will move to the cartridge change position, take cartridges out (2-1), lift printer head lock balance (2-2), then you can take out the printer head, place the printer head on clean paper (2-3) to prevent damage, do not touch the electronic panel.



Pic. 2-1



Pic. 2-2



Pic. 2-3

3. Install the silicon seal: check if the original seal and filter have dirt (3-1), if yes, please clean them, then use pliers to install the silicon seal on the printer head according to the shape (3-2), and check if ail seals are in the right position (3-3).



Pic. 3-1



Pic. 3-2



Pic. 3-3

