

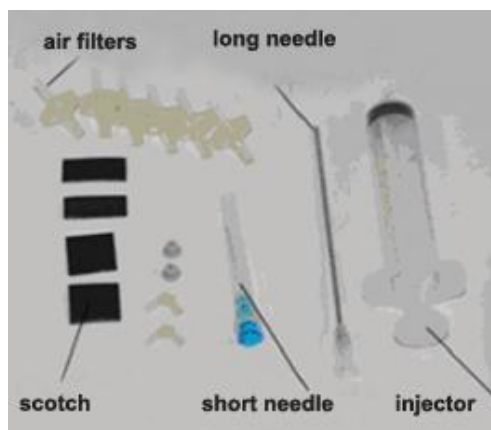
Installation Manual on Continuous ink supply system (CISS) For printer EPSON 1290

Thank you for using the “INKSYSTEM” Continuous ink supply system. It is the best device for an inkjet printer, and it will definitely decrease your printing costs. Before using this system, please read this manual carefully. The pictures in this manual may be different with the real ones. It’s just for your reference.

I. Inspection & Unpacking

1. Accessories

1) Continuous ink supply system	1
2) Air Filter	1
3) Sponge	1
4) Injector	1
5) Long needle	1
6) Short needle	1
7) Protection clamp	1
8) Installation Manual	1
9) Certificate on free installation.....	1



Pic. 1-3

2. Inspection before installation

A. Check whether all the accessories are present.

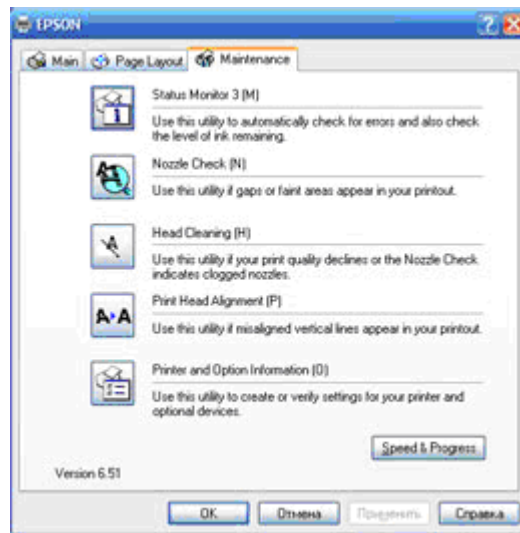
B. Check whether the system is retrieved normally or too much air is remained in the connecting tubes (length over 20cm).

If any items are missing, or if any problems are presented, please, contact your local distributor.

II. Printer test

1. Check the printer status, and its mechanics for any damage.

2. Print a test sheet on nozzle check to see if there are gaps in lines on the printout.



Pic. 2-1

3. If the printer is alright, make a printout to see the result.

Note: This system will not cause any damage to your printer.

III. Installation Procedures

1. Setting up the system

Place the system on the table, check to see if there is any ink in each of the air balance tube. If yes, you need to remove the ink in the balance tubes by the following steps:

- 1) Pull out the sealed plug of the balance tube.
- 2) Use the injector to draw ink out.
- 3) Put the sealed plug back.
- 4) Pull refill plug out.
- 5) Inject the ink in the injector into the ink holding tank according to its color.
- 6) Put the ink refill plug back.
- 7) You should check all the plugs to make sure they are completely sealed.



Pic. 3-1-2

2. Prepare the system

Put this system on the right side of printer, tidy up ink flow tubes, pull out an air balance plug and replace it with an air filter with the bigger side downwards. This is repeated for each air balance plug. Keep the air balance plugs for future use.

Move out cartridge holder

Press ink button. Move cartridge holder to the cartridge, changing position, pull the printer power off.

3. Remove the cartridge holder

Insert screwdriver like, screw screwdriver like until take cartridge cover off.

4. Install system cartridges

Take cartridges out. Install CISS cartridges according to printer indication and press cartridge down to the place.

5. Fix wire rack

Tear sponge seal off. Tidy up ink tube. Stick rack onto the printer cover like. Make sure that tube and rack will not fall off during printing. Ink tube can't be twisted.

6. Check tube length

Move cartridge holder to left side, then to right side, check if the tube is too long or too short. Move cartridge holder to right side, check if ink tube will fall down during movement, if fall down like, the holder will be blocked during printing. Generally, before shipment, we have adjusted the tube to the right size, please double check before printing.

7. Adjust tube length

If step 6 is ok, then there is no need to go through this step.

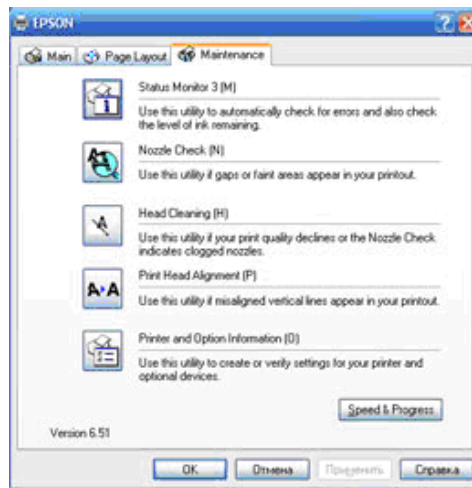
If the tube length is too short then lengthen it, if too long then shorten. If the tube falls down, you need adjust the angle of sticker to prevent falling.

8. Ready for printing

Plug on power source, turn power on and check whether printer is working.

9. Test printer nozzle

Select the option for printer nozzle check (3-9-1), print test sheet, if it is alright (3-9-2), you can start using the printer normally. If it is not (3-9-3), please clean the nozzle. If only line is missing for one color after cleaning several times, turn off the printer and let it stay turned off for one hour or more. The air bubble clogging up the nozzle is likely to dissipate, allowing you to print. If you still have problems, please contact your local distributor.



Pic. 3-9-1

IV. Ink Amount Reset

It is required to change the cartridges while printing when the ink light flashes. Press the ink button to take out the cartridge holder. Press the chip reset button for 3 seconds, then press the ink button again to move back the cartridge holder, the ink amount is showing 99% again. Redo nozzle the inspection and the printer will run normally if it is alright. (Black and other colors can be handled by the same method).

Note: There are two kinds of chips. They are handled in a similar way. The difference is that the chips with transferred switches should be switched downwards, otherwise the chips will not be recognized.

V. Removing used continuous ink supply system

Replace the air filters with air plugs. Remove the cartridge holder and take the rack off. Take the cartridges out and place them on a tissue with the ink flow nozzle facing downwards, and put the tissue at the same level as the system ink tank.

VI. Refill ink

During printing, if you found out that the ink level in the tank is below the red line, please add ink according to the methods.

VII. Check air balance tube

During printing, if you find some abnormal cases, such as bad output, ink drip out on paper, then you need to check the air balance tube to see if exist ink. If yes, please do according to the manual of "ink pump out from balance tube".

VIII. Warnings

1. During printing, please do not take cartridges over than the printer. Please keep ink tank and printer in the same level.
2. During printing, do not inverse, lift up or lower ink tanks.
3. Please do not block up ink tanks for curiosity or for fear of less ink

4. Use CISS at clean environment and within the temperature range 15-35 degrees.
5. Please use high-quality ink to prolong and to increase printing quality.
6. During shipment or storage, please do not turn the system over and always have the holes sealed with plugs, to prevent ink leakage.

IX. Product Warranty

INKSYSTEM warrants its products to be free from defects in material or workmanship. Rarely the equipment partly or completely fails within the warranty period. In these cases we do everything possible to ensure that our customers are satisfied with the purchase.

The warranty repairs are done quickly, with good quality and for free. The warranty duration is 12 months from the date of retail sale. Every product has a Warranty Certificate. The transportation of the failed product is provided by its owner.

We cannot provide a warranty repair under several conditions:

- If the warranty certificate is wrongly filled in.
- If the device has mechanical damages: chippings, dents, fractures, scratches, etc.
- If the identification information was removed or the information identification has been complicated in any possible way: additional notes, stickers, etc.
- If the user has previously performed a repair or change in the internal parts of the device.
- If the equipment has previously been repaired in a service center that is not an «INKSYSTEM» representative center.
- If the device was installed by the user.
- If the defect appeared under the circumstances of insuperable forces, accidents, intended or careless actions of the user or a third party.
- If the ink used was not manufactured by “INKSYSTEM” (South Korea)

The “INKSYSTEM” Company excludes for itself any liability for incidental, consequential, indirect, special, or punitive damages of any kind to people, pets or property if the stated damages have been affected because of rules and operational conditions / product installation disregard. The Company also excludes any liability for intentional or careless actions of the user or third parties, for loss of revenue or profits, loss of business, loss of information or data, or other financial loss arising out of or in connection with the sale, installation, maintenance, use, performance, failure, or interruption of the possibility of such damages.

Warranty certificate

<p>(Product)</p> <p>Continuous ink supply system</p> <p>(Model Name)</p> <p>_____</p> <p>(Serial №)</p> <p>_____</p> <p>(Date of Purchase)</p> <p>_____</p> <p>(Warranty Period)</p> <p>1 year from the date of retail purchase</p>	<p>Seller company</p> <p>_____</p> <p>SEAL</p> <p>_____</p>
--	---

The warranty conditions are agreed and accepted. No claims against the product appearance and the list of equipment.

Customer's signature
