

# Installation Manual on Continuous ink supply system (CISS) For EPSON RX530/R200/R210/R220/R300/R310/R320

Welcome your using Continuous ink supply system, it is the best device for printer, and it will decrease your printing cost. Before using this system, please read this manual carefully, it will help you to use this system properly, safely and effectively. The pictures in this manual may be different with the real ones. Here just for your reference.

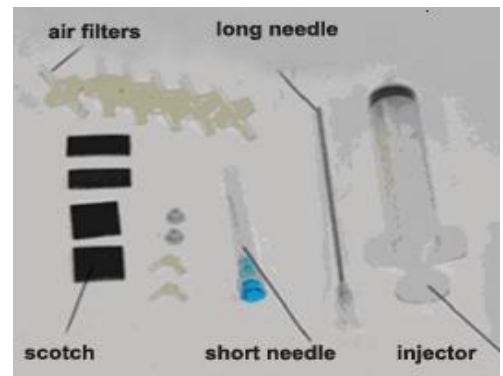
## I. Instruction on opening

### 1. Accessories

1) Continuous ink supply system .....	1
2) Air Filter .....	1
3) Sponge .....	1
4) Injector .....	1
5) Long needle .....	1
6) Short needle .....	1
7) Protection clamp .....	1
8) Installation Manual .....	1
9) Certificate on free installation .....	1



Pic. 1-1



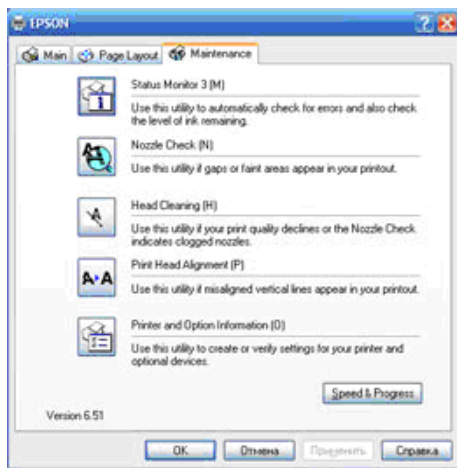
Pic. 1-2

### 2. Inspection before installation

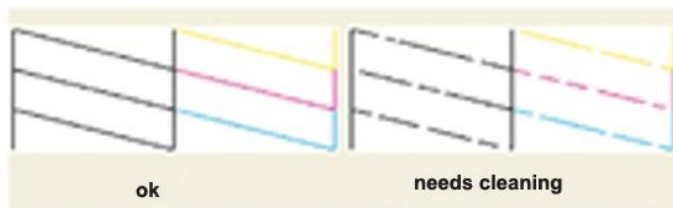
- A. Check whether all the accessories are available or not.
  - B. Check whether CISS is pulling out, if tube is disconnected.
- Please contact your local distributor if have noticed problems.

## II. Test printer

- 1. Check whether printer conditions are normal or not.
- 2. Enter nozzle test option (2-1), print nozzle test sheet to see whether nozzle is normal (2-2, 2-3).



Pic. 2-1



Pic. 2-2, 2-3

## II. Installation Procedures

### 1. Make the system ready

Put this system on the left side of printer, tidy up ink flow tubes (3-1-1), pull the air balance plug out (3-1-2) and replace it with an air filter with the bigger side downwards (3-1-3). This is repeated for each air balance plug. Keep the air balance plugs for future use.



Pic. 3-1-1



Pic. 3-1-2



Pic. 3-1-3

### 2. Move out cartridge holder

Press cartridge change button, move it out the position (3-2-1), plug power source off (3-2-2).



Pic. 3-2-1



Pic.3-2-2

### 3. Install system cartridges

Take original cartridges out (3-3-1), close the cover, move out the cartridge holder to left side (3-3-2), install the cartridges according to color order (3-3-3), press back cartridge cover (3-3-4).



Pic. 3-3-1



Pic. 3-3-2



Pic. 3-3-3



Pic. 3-3-4

### 4 Fix ink tube

Peel off sticker film, tidy up ink tube, fix ink tube on printer body as (3-4-1). During printing, the sticker can't be taken off and ink tube can't be twisted seriously as (3-4-2).



Pic. 3-4-1



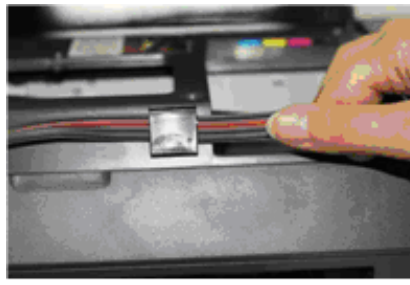
Pic. 3-4-2

## 5. Check tube length

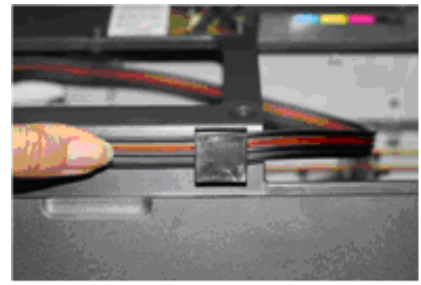
Move cartridge holder to left side (3-5-1), then to right side (3-5-2), check if the tube is too long or too short. Move cartridge holder to right side, check if ink tube will fall down during movement, if fall down like (3-5-3), the holder will be blocked during printing. Generally, before shipment, we have adjusted the tube to the right size, please double check before printing.



Pic. 3-6-1



Pic. 3-6-2



Pic. 3-6-3

## 6. Adjust tube length

If step 6 is ok, then there is no need to go through this step.

If the tube length is too short then lengthen (3-6-1) it, if too long then shorten (3-6-2). If the tube falls down, you need adjust the angle of sticker to prevent falling.



Pic. 3-6-1



Pic. 3-6-2

## 7. Ready for print

Plug power source on power source (3-8-1), turn the printer on (3-8-2), and check if the printer works or not.



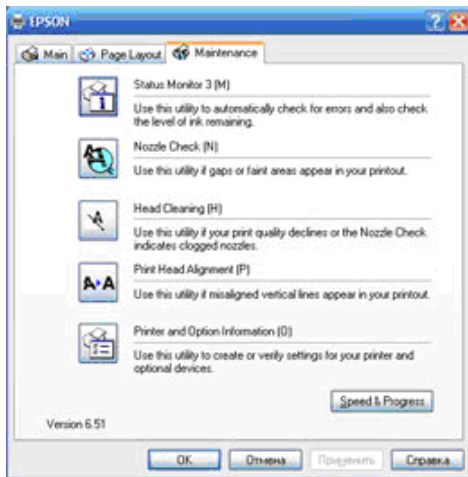
Pic. 3-7-1



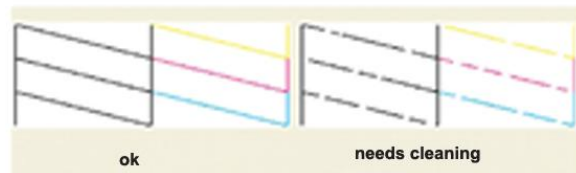
Pic. 3-7-2

## 8. Test printer nozzle

Select the option for printer nozzle check (3-8-1), print test sheet, if it is alright (3-8-2), you can start using the printer normally. If it is not (3-8-3), please clean the nozzle. If only line is missing for one color after cleaning several times, turn off the printer and let it stay turned off for one hour or more. The air bubble clogging up the nozzle is likely to dissipate, allowing you to print. If you still have problems, please contact your local distributor.



Pic. 3-8-1

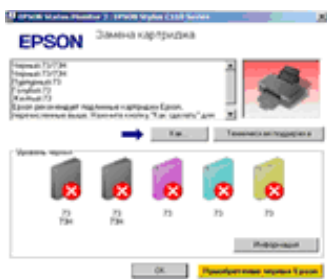


Pic. 3-8-2, 3-8-3

## IV. Ink Amount Reset

It requires to change cartridges while printing (4-1-1) and ink light flash (4-1-2). Press ink button to move out cartridge holder. Press chip reset button for 3 seconds (4-1-3), repress ink button to move back cartridge holder, then ink amount shows 99% again. Redo nozzle inspection and printer can run normally if it is alright. (Black and other colors can be handled by the same method).

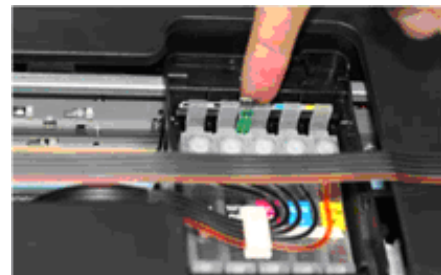
**Note:** Distinguish two kinds of chips (4-1-4). The manipulation is the same. The difference is that the chips with transferred switch should be switched downwards (4-1-5), otherwise, chips can not be recognized.



Pic. 4-1-1

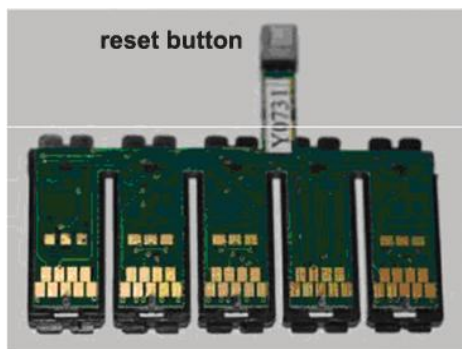


Pic. 4-1-2

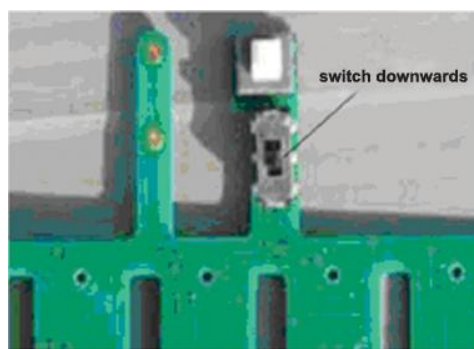


Pic. 4-1-3





Pic. 4-1-4



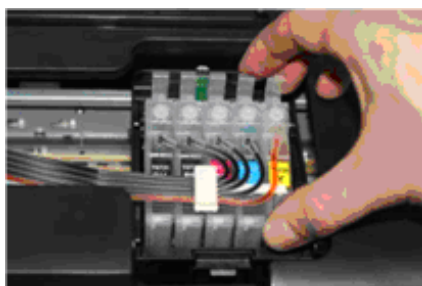
Pic. 4-1-5

## V. Removing used continuous ink supply system

Replace air filters with air plugs (5-1-1). Move out cartridge holder and take the rack off. Take the cartridges out (5-1-2) and place the cartridges on the tissue with the ink flow nozzle downwards, and let the tissue at the same level with the system ink tank (5-1-3).



Pic. 5-1-1



Pic. 5-1-2



Pic. 5-1-3

## VI. Refill ink

During printing, if you found out that the ink level in the tank is below the red line, please add ink according to the methods.

## VII. Check air balance tube

During printing, if you find some abnormal cases, such as bad output, ink drip out on paper, then you need to check the air balance tube to see if exist ink. If yes, please do according to the manual of "ink pump out from balance tube".

## VIII. Warnings

1. During printing, please do not take cartridges over than the printer. Please keep ink tank and printer in the same level.

2. During printing, do not inverse, lift up or lower ink tanks.

3. Please do not block up ink tanks for curiosity or for fear of less ink

4. Use CISS at clean environment and within the temperature range 15-35 degrees.

5. Please use high-quality ink to prolong and to increase printing quality.

6. During shipment or storage, please do not turn the system over and always have the holes sealed with plugs, to prevent ink leakage.

## **IX. Product Warranty**

INKSYSTEM warrants its products to be free from defects in material or workmanship.

The warranty repairs are done quickly, with good quality and for free. The warranty duration is 12 months from the date of retail sale. Every product has a Warranty Certificate. The transportation of the failed product is provided by its owner.

Please note that the ink and the photo paper are expendable materials and there can be no returning of unsealed ink tanks and photo paper packages. When defects are found by the service managers, a replacement for a new product is performed.

**Please adhere to the following points to receive a warranty service as soon as possible:**

When accepting the product check if the warranty certificate is filled in correctly.

- Keep the original receipt that contains the date of purchase information.
- Adhere to operating conditions that are provided in the User's Manual, or on the web-page of the specific product.
- Try to avoid mechanical damages when operating the product: chippings, dents, fractures, scratches, etc.

**We cannot provide a warranty repair under several conditions:**

- If the user has previously performed a repair or change in the internal parts of the device.
- If the equipment has previously been repaired in a service center that is not an «INKSYSTEM» representative center.
- If the device was installed by the user.
- If the defect appeared under the circumstances of insuperable forces, accidents, intended or careless actions of the user or a third party.
- If the ink used was not manufactured by “INKSYSTEM” (South Korea)
- If the printing limit was exceeded – more than 100 000 prints.

The “INKSYSTEM” Company excludes for itself any liability for incidental, consequential, indirect, special, or punitive damages of any kind to people, pets or property if the stated damages have been affected because of rules and operational conditions / product installation disregard. The Company also excludes any liability for intentional or careless actions of the user or third parties, for loss of revenue or profits, loss of business, loss of information or data, or other financial loss arising out of or in connection with the sale, installation, maintenance, use, performance, failure, or interruption of the possibility of such damages.

## Warranty certificate

<p><b>(Product)</b></p> <p>Continuous ink supply system</p> <p><b>(Model Name)</b></p> <p>_____</p> <p><b>(Serial No)</b></p> <p>_____</p> <p><b>(Date of Purchase)</b></p> <p>_____</p> <p><b>(Warranty Period)</b></p> <p>1 year from the date of retail purchase</p>	<p><b>Seller company</b></p> <p><b>SEAL</b></p>
---	---

The warranty conditions are agreed and accepted. No claims against the product appearance and the list of equipment.