

Installation Manual on Continuous Ink Supply System (CISS) For printer EPSON SX200/SX205/SX400/SX405/NX200/ NX400TX400/ TX200/TX203/TX209/TX409

Thank you for using the “INKSYSTEM” Continuous ink supply system. It is the best device for an inkjet printer, and it will definitely decrease your printing costs. Before using this system, please read this manual carefully.

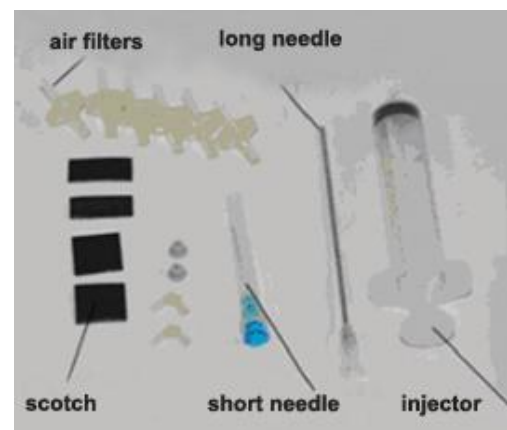
I. Instruction & Unpacking

1. Accessories

1) Continuous ink supply system	1
2) Air Filters	4
3) Sponge	1
4) Injector	1
5) Long needle	1
6) Short needle	1
7) Protection clamp	1
8) Installation Manual	1
9) Certificate on free installation.....	1



Pic. 1-1



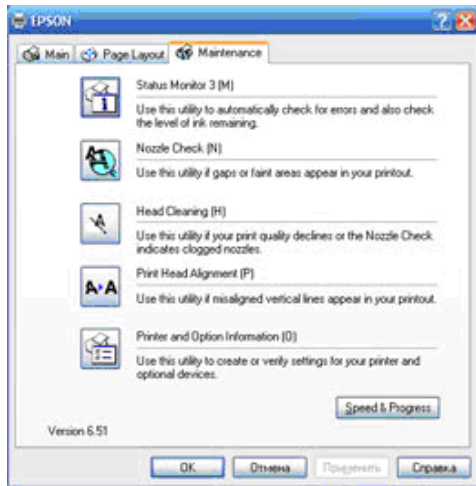
Pic. 1-2

2. Inspection before installation

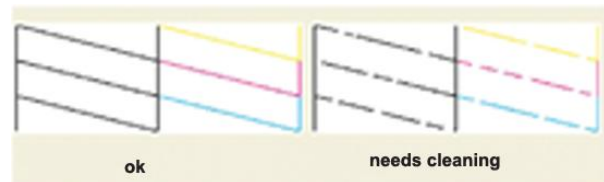
- A. Check whether all the accessories are available or not.
- B. Check whether the system is pulling out or too much air remained in the connecting tubes (length over 20cm)?

II. Test printer

1. Check printer status to see whether it is normal or not, and check its mechanics for any damage.
2. Print a test sheet on nozzle check to see if gaps appear on lines in the printout.



Pic. 2-1



Pic. 2-2, 2-3

3. If printer is alright, please print a picture to see the result.
Note: This system will not cause any damage to your printer.

II. Installation Procedures

1. Make the system ready

Put this system on the left side of printer, tidy up ink flow tubes, pull the air balance plug out (3-1-1) and replace it with an air filter with the bigger side downwards (3-1-2). This is repeated for each air balance plug. Keep the air balance plugs for future use.



Pic. 3-1-1



Pic. 3-1-2

2. Move out cartridge holder

Choose Main menu -> maintenance->cartridge change->cartridge change tools->next step->next step->confirm, then you can move out the cartridge holder, pressing button, plug off power source.

3. Take cartridge cover off

Take screwdriver out, shake the screwdriver, lift cartridge cover and take it off.

4. Insert ink cartridges

Take out original ink cartridges, insert system cartridges according to the color order, and press down the cartridges tightly, stick out ink tube.

5 Fix ink tube

Peel off sticker film, tidy up ink tube, fix ink tube on printer body. During printing, the sticker can't be taken off and ink tube can't be twisted seriously.

6. Check tube length

Move cartridge holder to left side, then to right side, check if the tube is too long or too short. Move cartridge holder to right side, check if ink tube will fall down during movement, the holder will be blocked during printing. Generally, before shipment, we have adjusted the tube to the right size, please double check before printing.

7. Adjust tube length

If step 6 is ok, then there is no need to go through this step.

If the tube length is too short then lengthen it, if too long then shorten. If the tube falls down, you need adjust the angle of sticker to prevent falling.

8. Fix ink tube

Fix ink tube, when you close printer cover, the pressure on ink tube should be tight, cannot be too heavy to stop ink-flow.

9. Ready for print

Plug power source on power source (3-9-1), turn the printer on, and check if the printer works or not.

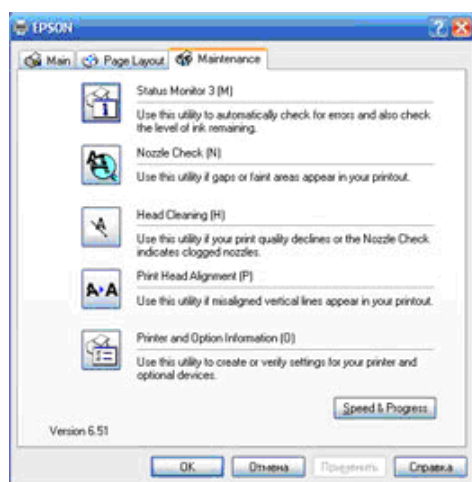


Pic. 3-9-1

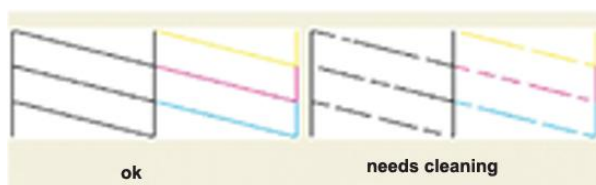
10. Test printer nozzle

Select the option for printer nozzle check (3-10-1), print test sheet, if it is alright (3-10-2), you can start using the printer normally. If it is not (3-10-3),

please clean the nozzle. If only line is missing for one color after cleaning several times, turn off the printer and let it stay turned off for one hour or more. The air bubble clogging up the nozzle is likely to dissipate, allowing you to print. If you still have problems, please contact your local distributor.



Pic. 3-10-1

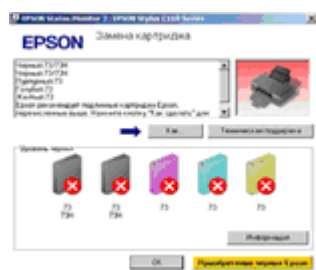


Pic. 3-10-2, 3-10-3

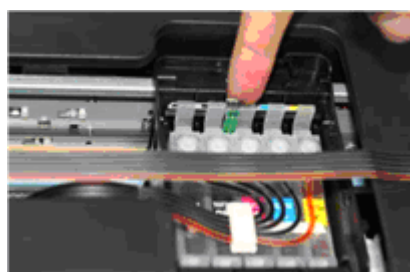
IV. Ink Amount Reset

It requires to change cartridges while printing (4-1-1) and ink light flash. Press ink button to move out cartridge holder. Press chip reset button for 3 seconds (4-1-2), repress ink button to move back cartridge holder, then ink amount shows 99% again. Redo nozzle inspection and printer can run normally if it is alright. (Black and other colors can be handled by the same method).

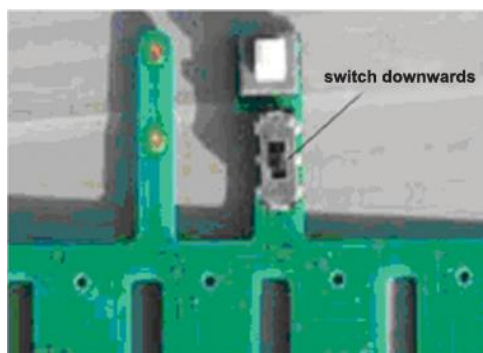
Note: Distinguish two kinds of chips. The manipulation is the same. The difference is that the chips with transferred switch should be switched downwards (4-1-3), otherwise, chips cannot be recognized.



Pic. 4-1-1



Pic. 4-1-2



Pic. 4-1-3

V. Removing used continuous ink supply system

Replace air filters with air plugs. Move out cartridge holder and take the rack off. Take the cartridges out and place the cartridges on the tissue with the ink flow nozzle downwards, and let the tissue at the same level with the system ink tank.

VI. Refill ink

During printing, if you found out that the ink level in the tank is below the red line, please add ink according to the methods.

VII. Check air balance tube

During printing, if you find some abnormal cases, such as bad output, ink drip out on paper, then you need to check the air balance tube to see if exist ink. If yes, please do according to the manual of "ink pump out from balance tube".

VIII. Warnings

1. During printing, please do not take cartridges over than the printer. Please keep ink tank and printer in the same level.
2. During printing, do not inverse, lift up or lower ink tanks.
3. Please do not block up ink tanks for curiosity or for fear of less ink
4. Use CISS at clean environment and within the temperature range 15-35 degrees.
5. Please use high-quality ink to prolong and to increase printing quality.
6. During shipment or storage, please do not turn the system over and always have the holes sealed with plugs, to prevent ink leakage.
7. Please do not shake cartridges to avoid leaking.
8. Please do not unplug joint elbow, do not tear off adhesive tape seal that at the bottom of cartridge, do not touch the IC chips that sideways.

IX. Product Warranty

INKSYSTEM warrants its products to be free from defects in material or workmanship. Rarely the equipment partly or completely fails within the warranty

period. In these cases we do everything possible to ensure that our customers are satisfied with the purchase.

The INKSYSTEM CISS installation is free in any of the representative offices.

The warranty repairs are done quickly, with good quality and for free. The warranty duration is 12 months from the date of retail sale. Every product has a Warranty Certificate. The transportation of the failed product is provided by its owner.

Please note that the ink and the photo paper are expendable materials and there can be no returning of unsealed ink tanks and photo paper packages. When defects are found by the service managers, a replacement for a new product is performed.

Please adhere to the following points to receive a warranty service as soon as possible:

When accepting the product check if the warranty certificate is filled in correctly.

- Keep the original receipt that contains the date of purchase information.
- Demonstrate the failed device to the service center managers (the warranty repair or replacement can be provided only upon the failed product availability).
- Ensure that the service center gets the product with its full set: descriptions, chips, tubes, etc.

We cannot provide a warranty repair under several conditions:

- If the warranty certificate is wrongly filled in.
- If the device has mechanical damages: chippings, dents, fractures, scratches, etc.
- If the identification information was removed or the information identification has been complicated in any possible way: additional notes, stickers, etc.
- If the user has previously performed a repair or change in the internal parts of the device.
- If the equipment has previously been repaired in a service center that is not an «INKSYSTEM» representative center.
- If the device was installed by the user.
- If the defect appeared under the circumstances of insuperable forces, accidents, intended or careless actions of the user or a third party.
- If the ink used was not manufactured by “INKSYSTEM” (South Korea)
- If the printing limit was exceeded – more than 100 000 prints.

The “INKSYSTEM” Company excludes for itself any liability for incidental, consequential, indirect, special, or punitive damages of any kind to people, pets or property if the stated damages have been affected because of rules and operational conditions / product installation disregard. The Company also excludes any liability for intentional or careless actions of the user or third parties, for loss of revenue or profits, loss of business, loss of information or data, or other financial loss arising out of or in connection with the sale, installation, maintenance, use, performance, failure, or interruption of the possibility of such damages.

Warranty certificate

<p><i>(Product)</i></p> <p>Continuous ink supply system</p> <p><i>(Model Name)</i></p> <p>_____</p> <p><i>(Serial No)</i></p> <p>_____</p> <p><i>(Date of Purchase)</i></p> <p>_____</p> <p><i>(Warranty Period)</i></p> <p>1 year from the date of retail purchase</p>	<p>Seller</p> <p>company</p> <p>SEAL</p>
---	--

The warranty conditions are agreed and accepted. No claims against the product appearance and the list of equipment.

Customer's signature