

How to install a CISS onto an Epson Artisan 725

1. Place the CISS on the right side of the printer (pic. 1) and straighten the pipe.

2. Pull out the small plugs and carefully insert air filters into their place (pic. 2). Make sure to keep the plugs for further transportation of the printer with the CISS installed.



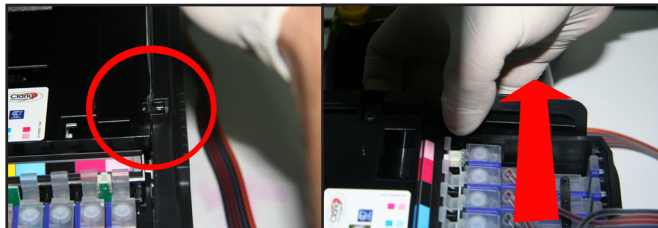
pic. 1



pic. 2

3. With the help of a cross screwdriver carefully unscrew the screw fixing the side panel of the case (pic. 3). Bend the panel rightwards with your right hand (pic. 4) and lift the printer case with your left hand until you see the magnet sensor (pic. 5).

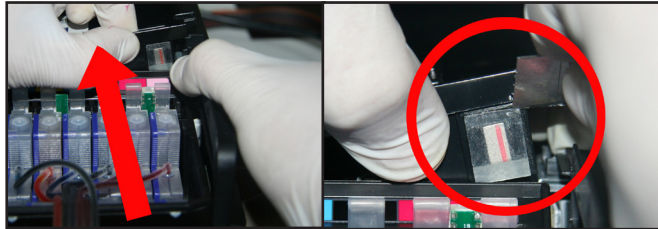
4. Carefully take off the magnet sensor together with the scotch tape using a box cutter (pic. 6). **Attention**, do not change the polarity or turn the sensor



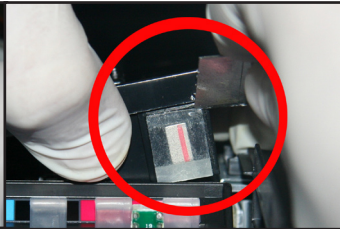
pic. 3



pic. 4



pic. 5

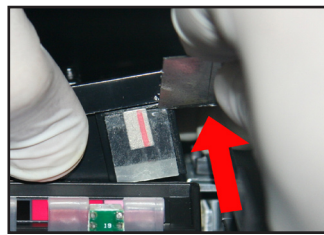


pic. 6

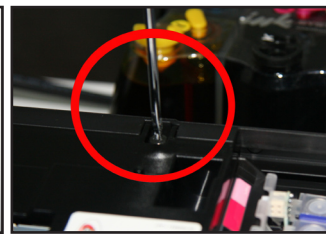
around.

5. Cut off the upper part of the scotch tape up to the magnet sensor and stick the sensor back placing it at the very top (pic. 7).

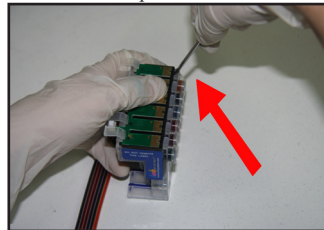
6. Return the case into the previous position and fix the panel with the screw (pic. 8). Make sure that the order of the colors in the cartridges corresponds to the



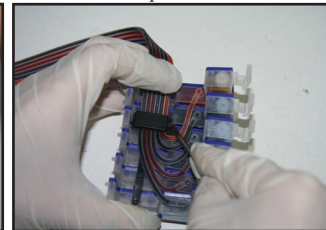
pic. 7



pic. 8



pic. 9

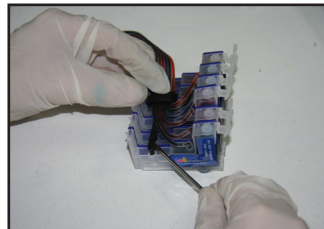


pic. 10

sticker on the printer. Check if the color order on the sticker of the printer matches with the order of color silicon plugs onto the cartridges. **In case of a mismatch the order should be changed.**

7. Holding the cartridge block with the chip up with your left hand, take the chip off the cartridge block with your right hand using a screwdriver, with a round movement (pic. 9).

8. Take off the clip fixing the ink pipe (pic. 10), then take off the cartridge coupler (pic. 11), change the sequence of the cartridges according to the sticker on the



pic. 11



pic. 12

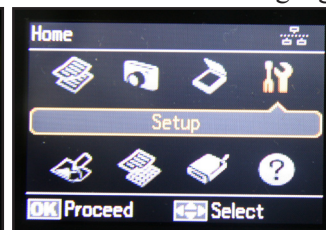
printer, assemble the cartridge block and install the chip.

9. Install the cartridge block (pic. 12).

10. Switch the printer on and select the language



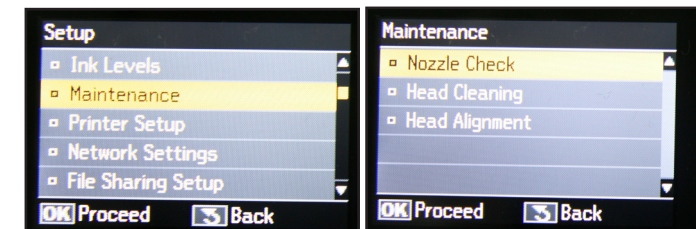
pic. 13



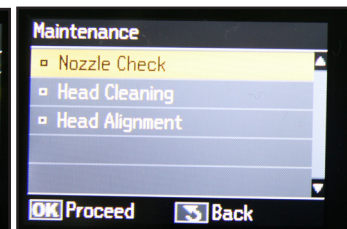
pic. 14

on the screen (pic. 13). Select the "Setup" option in the printer menu (pic. 14), then go to "Maintenance" (pic. 15), perform the print head condition test by printing out a "nozzle test" (pic. 16).

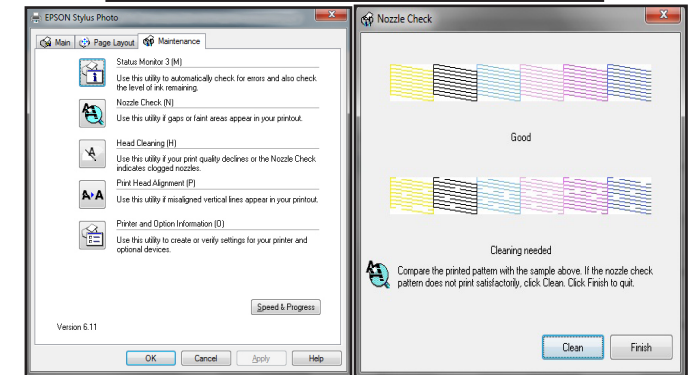
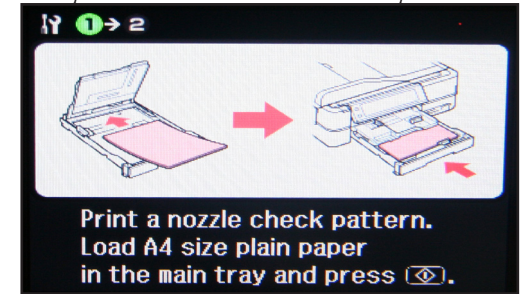
11. Connect the printer to the computer, go to



pic. 15



pic. 16



pic. 17

pic. 18

Start - Devices and printers, click the right mouse button on your printer and select Printing preferences – Maintenance – Nozzle check (pic. 17).

12. In order to transport the printer replace the air filters with the silicone plugs. Do not leave the printer without cartridges or a CISS, otherwise the print head will dry up. Any movement of the printer from one place to another should be performed with utmost care and compliance with the transportation rules, otherwise moving the tank may result in ink leaking into the printer which will disable the device.

Refilling and filling a CISS

Watch the ink level in the tanks carefully while using a CISS. When the ink level reaches the “red line” shown on the brand sticker follow these steps:

1. Open the big silicone plugs (pic. 20).
2. Use a syringe to extract the ink from the bottle (pic. 21).
3. Pour the ink into the big holes of the INK-



pic. 20



pic. 21

SYSTEM tank (pic. 22).

ATTENTION! Fill the colors according to the colored plugs on the tank. Wash the syringe after filling each color. Do not mix colors.

4. After filling the tank wipe the ink off the filling hole and close the plugs (pic. 23).

If you are filling the system for the first time and the



pic. 22

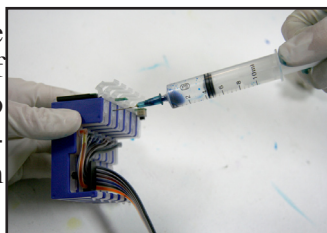


pic. 23

cartridges are not installed into the printer yet, do 1-3 and then:

5. With the help of a syringe with a medical needle poke through the silicone plug on the upper part of the cartridge and pull the air out until the ink comes into the syringe (pic. 24).

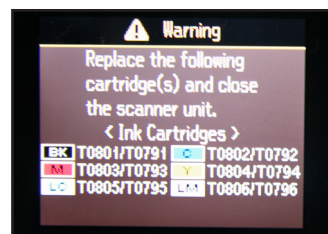
6. Take the syringe out and wipe the surface of the cartridge with a tissue to remove the residual ink. Repeat the procedure for each of the cartridges.



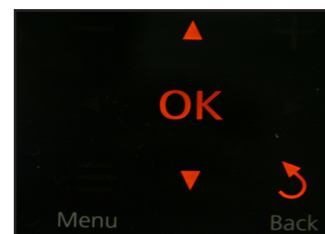
pic. 24

Resetting the ink level

1. If during operation the printer demands that cartridges be changed, the message “Ink cartridges not recognized” will appear on the screen (pic. 25).
2. Press the “OK” button on the printer panel (pic. 26).



pic. 25



pic. 26

3. Lift the printer scanner block. The cartridge block has a green lobe with the ink level reset button above the cartridges.

4. Get hold of the ink level reset button, press it from the back and hold it for 5 to 7 seconds (pic. 27, pic. 28).



pic. 27



pic. 28

5. To finish the ink level resetting procedure press the “OK” button (pic. 26).

6. The printer will be ready for operation in several minutes

If you have any questions about installation or using of your product, please contact us:

✉ support@inksystem.com S inksystem.service

www.ink-system.eu 🌸 626-349-484

f www.facebook.com/inksystemcom

📺 www.youtube.com/inksystemcom



Thank you for choosing CISS from INKSYSTEM®. We recommend to read the manual before installing CISS onto your printer!



Warranty card

Product: Continuous Ink Supply System

Printer model:

CISS Serial №:

Printer serial №:

Purchasing date:

Warranty period: 24 month from purchase date.

I agree with warranty agreement.

I have no complaints for the product.

Client signature

Free Installation Certificate



This certificate allows you to install CISS at any certified service center of INKSYSTEM® for free.

Sales company

Seal