

How to install a CISS onto an Epson SX440W

1. Place the CISS on the left side of the printer (pic. 1) and straighten the pipe.

Check if the color order on the sticker of the printer matches with the order of color silicon plugs onto the cartridges.



pic. 1

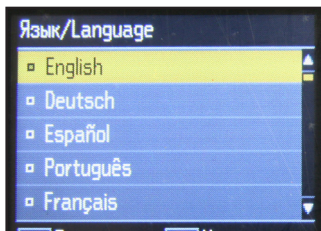


pic. 2

In case of a mismatch the order should be changed!

2. Pull out the small plugs and carefully insert air filters into their place (pic. 2). Make sure to keep the plugs for further transportation of the printer with the CISS installed.

3. Plug in the printer to the electric network and select



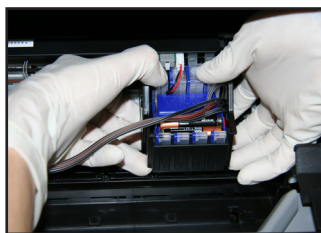
pic. 3



pic. 4

the language (pic. 3). Lift the lid of the printer. After the carriage moves into the “cartridge change” position (pic. 4), unplug the printer from the electric network by pulling the power cable out of the socket.

4. Insert the cartridge block into the carriage and move



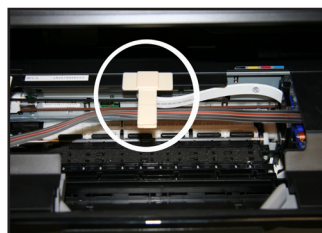
pic. 5



pic. 6

it to the center of the printer so that you can hold it with both hands (pic. 9) and carefully push the cartridges down until they click in (pic. 5).

5. Make sure that all the four cartridges are properly clicked in (pic. 6).



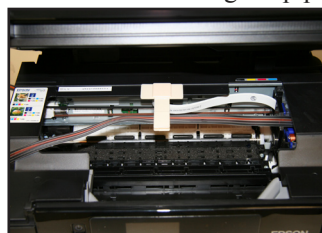
pic. 7



pic. 8

6. Place the T bracket in the middle of the printer and fix the ink pipe into it (pic. 7). Make sure that there is no twist in the pipe to ensure the proper operation of the printer.

7. Move the carriage into the extreme left position (pic. 8) then to the extreme right position (pic. 9), check that there is no twist along the pipe and that it doesn't interfere with



pic. 9

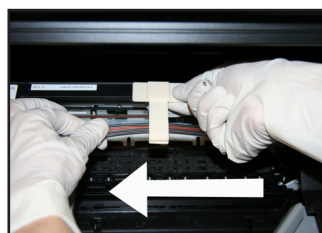


pic. 10

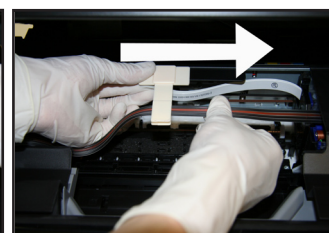
the movement of the carriage. The pipe should not be slack.

8. Place the plastic clip onto the case of the printer on its left side. Fix the ink pipe into the clip (pic. 10).

9. If the pipe is shorter than needed, pull it out in the needed direction by holding the T bracket with one hand and



pic. 11



pic. 12

pulling the pipe with the other (pic. 11, pic. 12).

10. The ink tanks should be on the same level with the printer, not higher and not lower.

11. Plug in the printer to the electric network.



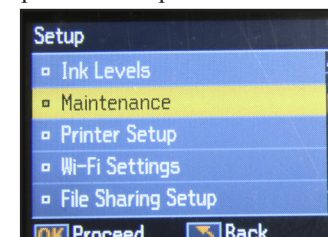
pic. 13



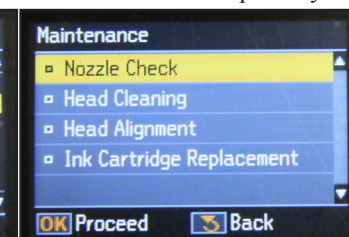
pic. 14

12. Switch the printer on. Select the language. The printer will inform you about the cartridge change. Perform the chip resetting procedure described in the section “Resetting the ink level”.

After the printer shows that it's ready for operation you should perform the print head condition test. Select “Setup” on your



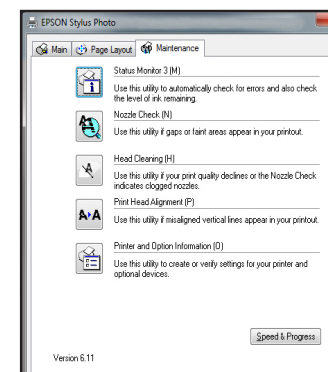
pic. 15



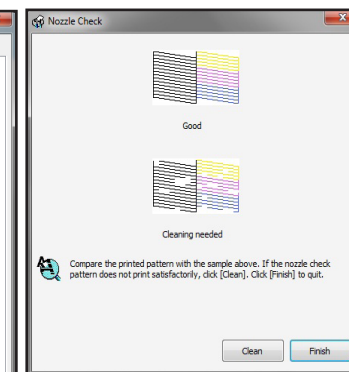
pic. 16

printer screen (pic. 14), then “Maintenance” (pic. 15) and press “OK” on the “Nozzle check” option. Compare the printed out test with the variant shown in (pic. 18).

You can also perform the print head condition test through the driver installed on your computer by going to Start



pic. 17



pic. 18

- Printers and faxes and clicking the right mouse button on your printer to select Printing preferences – Maintenance – Nozzle check.

13. In order to transport the printer replace the air filters with the small plugs. Do not leave the printer without cartridges or a CISS, otherwise the print head will dry up. Any movement of the printer from one place to another should be performed with utmost care and compliance with the transportation rules, otherwise moving the tank may result in ink leaking into the printer which will disable the device.

Refilling and filling a CISS

Watch the ink level in the tanks carefully while using a CISS. When the ink level reaches the “red line” shown on the brand sticker follow these steps:

1. Open the big silicone plugs (pic. 20).
2. Use a syringe to extract the ink from the bottle (pic. 21).
3. Pour the ink into the big holes of the INK-



SYSTEM tank (pic. 22).

ATTENTION! Fill the colors according to the colored plugs on the tank. Wash the syringe after filling each color. Do not mix colors.

4. After filling the tank wipe the ink off the fill-hole and close the plugs (pic. 23).

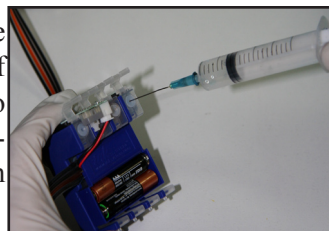
If you are filling the system for the first time and the



cartridges are not installed into the printer yet, do 1-3 and then:

5. With the help of a syringe with a medical needle poke through the silicone plug on the upper part of the cartridge and pull the air out until the ink comes into the syringe (pic. 24).

6. Take the syringe out and wipe the surface of the cartridge with a tissue to remove the residual ink. Repeat the procedure for each of the cartridges.

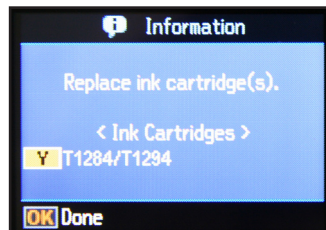


pic. 24

Resetting the ink level

1. If the printer screen shows the message “Change the cartridge(s)” during the operation of the printer and the “OK” button lights up (pic. 25).

2. Press the “OK” button (pic. 26).



pic. 25



pic. 26

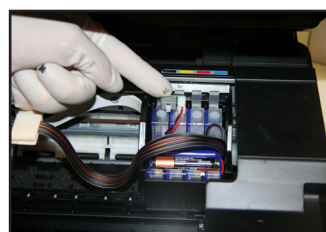
3. The cartridge carriage will move to the “cartridge change” window (pic. 25).

4. The screen will show the colors of the empty cartridges (pic. 25).

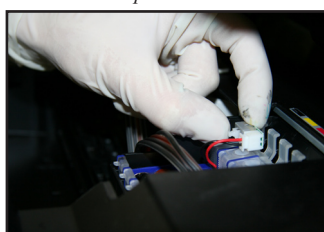
5. Above the cartridges there is a green lobe with a button. Get hold of the ink level reset button, press it from the back (pic. 28) and hold it for 5 to 7 seconds (pic. 29).



pic. 27



pic. 28



pic. 29

“OK” button (pic. 26).

7. The printer will be ready for operation in several minutes.

If you have any questions about installation or using of your product, please contact us:

✉ support@inksystem.com S inksystem.service

www.ink-system.eu 🌸 626-349-484

f www.facebook.com/inksystemcom

📺 www.youtube.com/inksystemcom



Thank you for choosing CISS from INKSYSTEM®. We recommend to read the manual before installing CISS onto your printer!



Warranty card

Product: Continuous Ink Supply System

Printer model:

CISS Serial №:

Printer serial №:

Purchasing date:

Warranty period: 24 month from purchase date.

I agree with warranty agreement.

I have no complaints for the product.

Client signature

Free Installation Certificate



This certificate allows you to install CISS at any certified service center of INKSYSTEM® for free.

Sales company

Seal