

## How to install a CISS onto an Epson SX125

1. Place the CISS on the right side of the printer (pic. 1) and straighten the pipe.

Check if the color order on the sticker of the printer matches with the order of color silicon plugs onto the cartridges.

**In case of a mismatch the order should be changed!**



pic. 1



pic. 2

2. Pull out the small plugs and carefully insert air filters into their place (pic. 2). Make sure to keep the plugs for further transportation of the printer with the CISS installed.

3. Plug in the printer to the electric network. Lift the lid of the printer and the lid of the cartridge section (pic. 3).



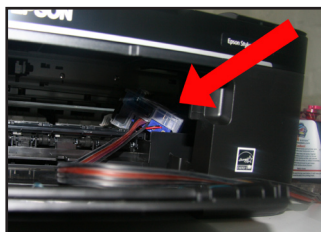
pic. 3



pic. 4

After the carriage moves into the "cartridge change" position (pic. 4), unplug the printer from the electric network by pulling the power cable out of the socket.

4. Move the carriage into the extreme left position.



pic. 5



pic. 6

Slide the cartridge block through the paper output opening in the printer and into the cartridge change window (pic. 5, pic. 8). Return the carriage into the "cartridge change" position.

5. Insert the cartridge block into the carriage. Hold the carriage with your left hand from below, inside the printer, and push the cartridges down with your right hand until they click in



pic. 7



pic. 8



pic. 9

(pic. 9). Place the T bracket in the middle of the printer by fixing it to the scanner bottom and fix the ink pipe into it (pic. 10).

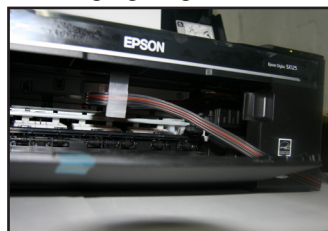
6. Move the carriage into the extreme left position (pic. 11) then to the extreme right position (pic. 12), check that there is no twist along the pipe and that it doesn't interfere with the movement of the carriage. The pipe should not be slack.

7. Place the plastic clip onto the case of the printer from the front. Fix the ink pipe into the clip (pic. 15).

8. If the pipe is shorter than needed, pull it out in the needed direction by holding the T bracket with one hand and pulling the pipe with the other (pic. 13, pic. 14). Make sure that there is no twist in the pipe to ensure the proper operation of the



pic. 11



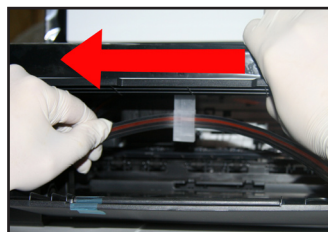
pic. 12

printer.

9. The ink tanks should be on the same level with the printer, not higher and not lower (pic. 13).



pic. 13

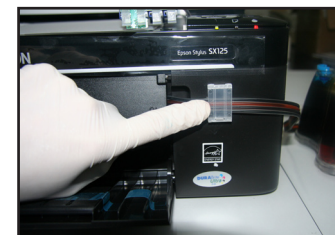


pic. 14

10. Plug in the printer to the electric network.

11. Switch the printer on. The "ink drop" button indicator will light up. Perform the chip resetting procedure described in the section "Resetting the ink level".

After the printer shows that it's ready for operation you should perform the print head condition test. In order to do that, switch the printer off. When the printer is switched off, press the "ink drop" button and keep it pressed while you are switching the printer on (pic. 16). Keep the "ink drop" button pressed for 10 more seconds after the printer is switched on.

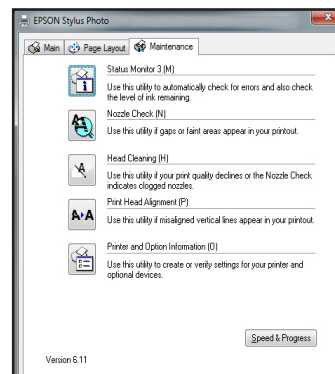


pic. 15

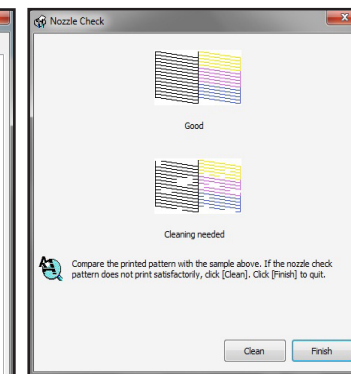


pic. 16

You can also perform the print head condition test through the driver installed on your computer by going to Start - Printers and faxes and clicking the right mouse button on your printer to select Printing preferences - Maintenance - Nozzle check.



pic. 17



pic. 18

12. In order to transport the printer replace the air filters with the small plugs. Do not leave the printer without cartridges or a CISS, otherwise the print head will dry up. Any movement of the printer from one place to another should be performed with utmost care and compliance with the transportation rules, otherwise moving the tank may result in ink leaking into the printer which will disable the device.



## Refilling and filling a CISS

Watch the ink level in the tanks carefully while using a CISS. When the ink level reaches the “red line” shown on the brand sticker follow these steps:

1. Open the big silicone plugs (pic. 20).
2. Use a syringe to extract the ink from the bottle (pic. 21).
3. Pour the ink into the big holes of the INK-



pic. 20



pic. 21

SYSTEM tank (pic. 22).

**ATTENTION!** Fill the colors according to the colored plugs on the tank. Wash the syringe after filling each color. Do not mix colors.

4. After filling the tank wipe the ink off the filling hole and close the plugs (pic. 23).
- If you are filling the system for the first time and the



pic. 22

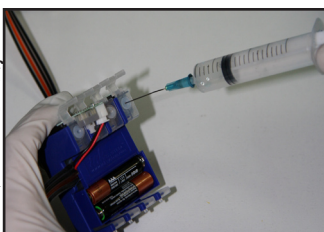


pic. 23

cartridges are not installed into the printer yet, do 1-3 and then:

5. With the help of a syringe with a medical needle poke through the silicone plug on the upper part of the cartridge and pull the air out until the ink comes into the syringe (pic. 24).

6. Take the syringe out and wipe the surface of the cartridge with a tissue to remove the residual ink. Repeat the procedure for each of the cartridges.



pic. 24

## Resetting the ink level

1. If the “ink drop” button lights up during operation of the printer (pic. 25) you should follow the ink level resetting procedure.
2. Press the “ink drop” button (pic. 26) and open the lid of the printer and the lid of the cartridge section.



pic. 25



pic. 26

3. Get hold of the ink level reset button, press it from the back (pic. 28) and hold it for 5 to 7 seconds (pic. 29).
4. To finish the ink level resetting procedure press the



pic. 27



pic. 28



pic. 29

“ink drop” button (pic. 25).

5. The printer will be ready for operation in several minutes.

If you have any questions about installation or using of your product, please contact us:

✉ support@inksystem.com S inksystem.service

www.ink-system.eu 🌸 626-349-484

f www.facebook.com/inksystemcom

📺 www.youtube.com/inksystemcom



Thank you for choosing CISS from INKSYSTEM®. We recommend to read the manual before installing CISS onto your printer!



## Warranty card

Product: Continuous Ink Supply System

Printer model:

CISS Serial №:

Printer serial №:

Purchasing date:

Warranty period: 24 month from purchase date.

I agree with warranty agreement.

I have no complaints for the product.

Client signature

## Free Installation Certificate



This certificate allows you to install CISS at any certified service center of INKSYSTEM® for free.

Sales company

Seal